



LR-IS-FL

LONG-RANGE SECTOR
IRRIGATION

Water consumption controller

Compatibility

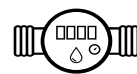
24V solenoid valve



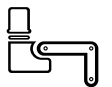
Stations

2/4/6/9/12

Sensor input



ou



Power supply

24 VAC



Connections



Range

800^m

Managed via



* Variable range depending on the configuration of the installation



LR-IS-FL

LR-IS-fl is the LoRa™ long Range and bluetooth irrigation controller powered by 24 VAC. Thanks to the LoRa™ radio association with LR-MB or LR-BST gateway, the LR-IS-FL is remotely controlled via the MySOLEM applications and platform. The connection on the sensor input of a water meter's pulse captor allows to monitor overconsumptions, under-consumptions or leakages.



Long-range

Unmatched LoRa™ radio range (a minimum of 5 times better than radios standards) between the LR-MB or LR-BST gateway and your LR-IS-FL programmer.



Connected to the weather

Automatically reduces or increases the watering time according to weather forecasts (automatic waterbudget).



Control your water consumption

Supervise continuously the flow of water consumed on each station and detect leakage or abnormal consumption instantly.



MySOLEM

Remote control from MySOLEM App and platform.



MAKE IT SIMPLE



DOWNLOAD MYSOLEM APP FOR FREE



INSTALLATION

External transformer 230V/24VAC
Electrical connection terminal block
Flowmeter or rain sensor connection
Master valve
Solenoid connection 24V
Environment : from 0°C to 50°C
Possible programming : start time, programs ...
Yellow wire* : rain sensor connection or pulse contactor of a water meters

TECHNICAL FEATURES

Power supply: 230 V-50 Hz / 24 V-50 Hz
Conso. max.: 0,75 A (18VA)
Surge protection at 4kV
Bluetooth® Smart 4.2 Low Energy
LoRa™ radio communication
Permanent backup of the programming
Save the time in case of power failure at least 10 hours

DIMENSIONS

Width: 11 - 16 cm
Height: 14,5 cm
Depth: 3,6 - 4,2 cm

*The yellow wire allows to act locally on the controllers but also on others through a setting on MySOLEM.