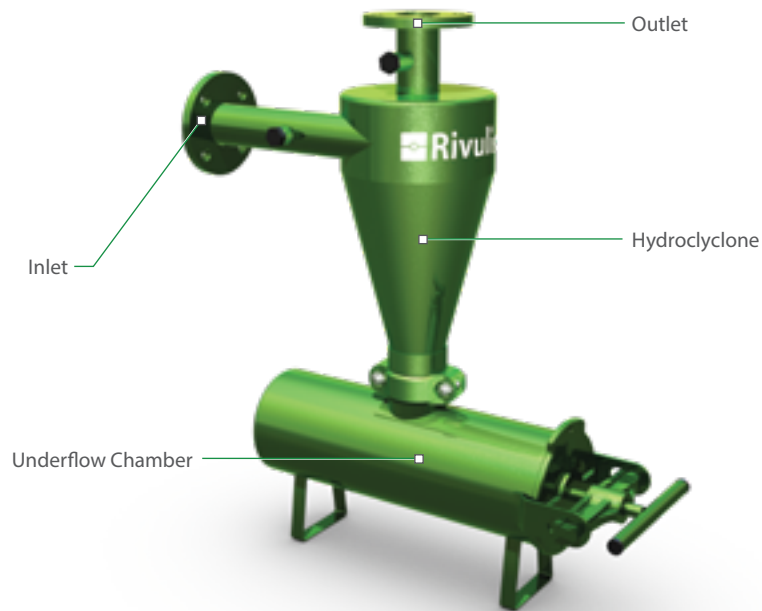


F1000

Hydrocyclone Sand Separator



Advantages

- Helps remove large amounts of inorganic solids such as sand, silt, and grit
- Used as a pre-filter upstream of primary filtration
- Prevents large particles from overwhelming your primary filters

Applications

- For well water and rivers with high loads of sand

Product Specifications

Minimum working pressure (psi)	29
Maximum working pressure (psi)	116
Maximum pressure (psi)	145

Grower Benefits

- Easy to use
- Works without power
- Simple to clean

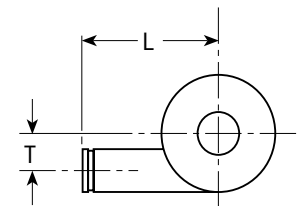
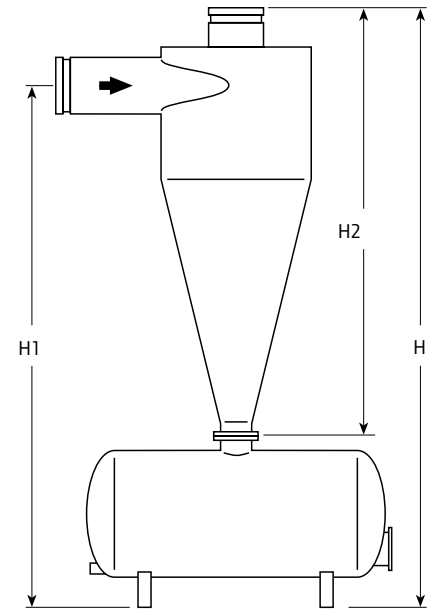
Product Information

Inlet / Outlet Diameter		Underflow Chamber	Recommended Flow Rate
inch	mm	gal	gpm
1½	40	2.6	41-58
2	50	2.6	55-77
3	80	2.6	114-161
4 in/3 out	100 in/80 out	16	164-232
4	100	32	270-382
6	150	58	519-733
6 long	150 long	58	748-1,057
8	200	85	1,169-1,654



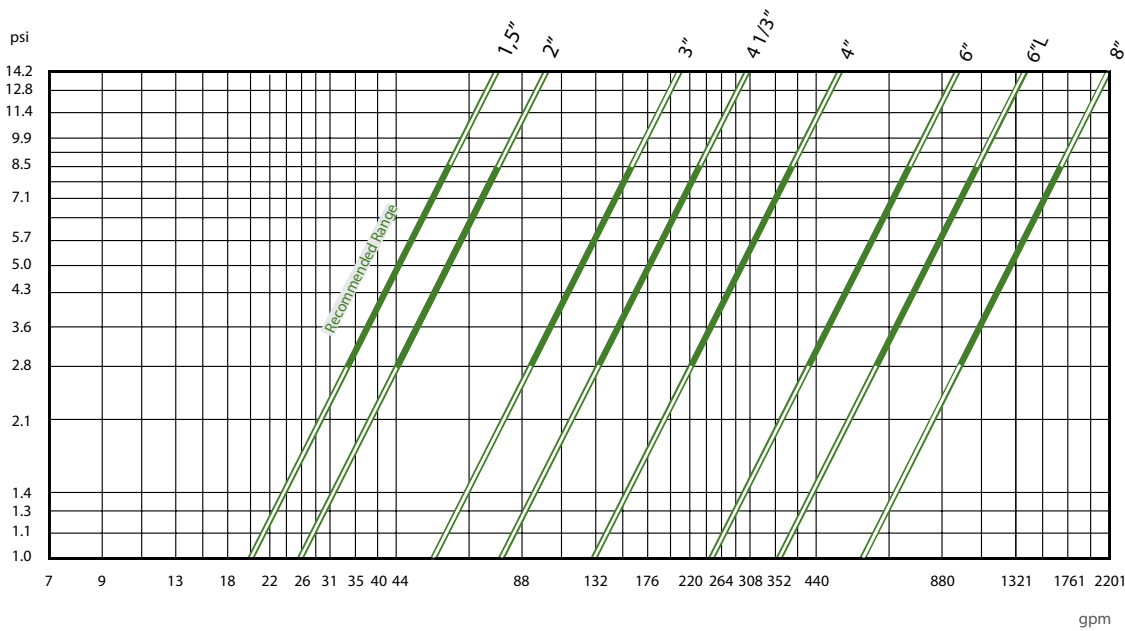
Product Dimensions

Inlet/Outlet - B		D	H	H1	H2	L	T	Weight
inch	mm	in	in	in	in	in	in	lb
1.5	40	6	25	19	17	9	2.5	42
2	50	8	29	23	21	12	3	44
3	80	8	33	26	24	12	2.6	60
4 in/3 out	100/80	12	52	45	29	20	4	146
4	100	16	68	58	38	24	6	276
6	150	20	75	63	45	24	7	379
6 Long	150 Long	24	85	73	55	24	9	452
8	200	30	111	93	76	28	10.5	805



Head Loss Chart

Recommended head loss of 4 - 9 psi



Product List

Rivulis F1000 Hydrocyclone Sand Separator

Product Description	Inlet / Outlet Diameter	
	inch	mm
F1000 3" ASA (Flange) with 2.6 Gal Underflow Chamber	3	80
F1000 4" x 3" ASA (Flange) with 16 Gal Underflow Chamber	4 in/3 out	100 in/80 out
F1000 4" ASA (Flange) with 32 Gal Underflow Chamber	4	100
F1000 6" ASA (Flange) with 58 Gal Underflow Chamber	6	150
F1000 6" Long ASA (Flange) with 58 Gal Underflow Chamber	6	150
F1000 8" ASA (Flange) with 85 Gal Underflow Chamber	8	200



Case study outcomes are for information purposes only and actual results may vary. This literature has been compiled for circulation in USA, Mexico and Canada. Descriptions, photos, and information are for general purpose use only. Please consult with an irrigation specialist and technical specifications for proper use of Rivulis products. Because some products are not available in all regions, please contact your local dealer for details. Rivulis reserves the right to change specifications and the design of all products without notice. Every effort has been used to ensure that product information, including data sheets, schematics, manuals and brochures are correct. However information should be verified before making any decisions based on this information. 031720